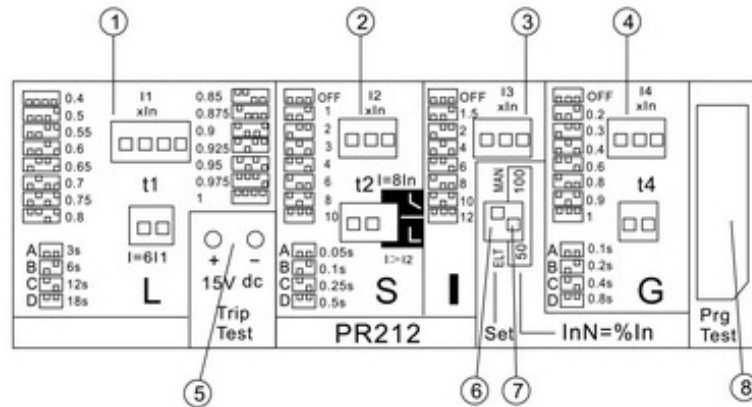


Electronic Circuit Breakers																	
		DAM1-250				DAM1-630(400)				DAM1-800				DAM1-1600			
Model		N	S	H	G	N	S	H	G	N	S	H	G	S	H	G	
Breaking Capacity Code																	
Rated Current of Frame size- Inm		(A) 250A				400A				800A				1600A			
Rated Current-In(40,50 or 55°C)		(A) 125 - 160(180) - 200(225) - 250 - 320A				250 - 315 (350) - 400 - 500 - 630A				400 - 500 - 630 (700) - 800 - 1000A				800 - 1000 - 1250 - 1600A			
Rated Insulation Voltage -Ui(a.c.) 50-60Hz		(V) 750V				750V				750V				750V			
Rated operation Voltage -Ue(a.c.) 50-60Hz		(V) 400/415V				400/415V				400/415V				400V			
Number of Pole		3P				3P / 4P				3P				3P			
Rated ultimate short Circuit breaking Capacity kA Icu AC400V/50Hz O-CO		(kA) 35	50	65	85	35	50	70	85	35	50	70	85	65	85	100	
Rated service short Circuit breaking Capacity kA Ics AC400V/50Hz O-CO-CO		(kA) 26.25	37.5	48.75	51	26.25	37.5	52.5	52.5	35	37.5	52.5	52.5	50	50	50	
Rated short-circuit breaking capacity Icm(peak)/cos φ AC400V/50Hz O-CO		(kA) 77/0.25	114/0.25	143/0.2	178/0.2	70/0.25	110/0.25	154/0.2	187/0.2	77/0.25	100/0.25	154/0.2	187/0.2	105/0.25	143/0.2	220/0.2	
Rated impulse withstand Voltage -Uimp		(V) 8000				8000				8000				8000			
Dielectric Property (V)		3000				3000				3000				3000			
Ionization distance		(mm) ≤30/0※				≤60/0※				≤80/0※				≤80/0※			
Endurance	Total Cycles	8000				5000				5000				3000			
	Electrical Life	1000				1000				1000				500			
	Mechanical Life	7000				4000				4000				2500			
Over Current trip	Thermal release adjustable	(0.4-0.5-0.6-0.7-0.8-0.9-1)x1n				(0.4-0.5-0.6-0.7-0.8-0.9-1)x1n				(0.4-0.5-0.6-0.7-0.8-0.9-1)x1n				(0.4-0.5-0.6-0.7-0.8-0.9-1)x1n			
	Magnetic release adjustable	(1.5-2-4-6-8-10-12)x1n				(1.5-2-4-6-8-10-12)x1n				(1.5-2-4-6-8-10-12)x1n				(1.5-2-4-6-8-10-12)x1n			
Operating Curve at 6Ir		3S-6S-12S-18S				3S-6S-12S-18S				3S-6S-12S-18S				3S-6S-12S-18S			
Category (EN 60947-2/ IEC 60947-2)	Main circuit	A/B				A/B				A/B				A/B			
	Auxiliary circuit	AC-15				AC-15				AC-15				AC-15			
Under Voltage Release		✓				✓				✓				✓			
Shunt Release		✓				✓				✓				✓			
Auxiliary Contact		✓				✓				✓				✓			
Alarm Contact		✓				✓				✓				✓			
Auxiliary Contact and Alarm Contact		✓				✓				✓				✓			
Handle Operation Mechanism		✓				✓				✓				✓			
Electrical Operation Mechanism		✓				✓				✓				✓			
DIN clips		-				-				-				-			
Terminal cover		✓				✓				✓				✓			
Phase separator		✓				✓				✓				✓			
Extention Handle		✓				✓				✓				✓			
Outline dimensions 	W (mm)	3P	105				140				210				210		
		4P	-				184				-				-		
	L (mm)	3P	212.5				254				268				406		
		4P	-				254				-				-		
H (mm)	3P	103.5				103.5				103.5				138.5			
	4P	-				103.5				-				-			
Weight	Fixed version 3P/4P	2.7/3.5	41.5/5.5				5.1/7.1				9.6/12.5				17.2/22.2		
	Plug-in version 3P/4P	3.2/4.2	4.6/6				6.5/8.5				-				-		
	Draw out version 3P/4P	3.6/4.6	5/6.4				6.5/8.7				12.2/15.3				22/30.1		

Electronic release



DAM1 series circuit breaker (Inm 250A and the above) applies the most advanced PR211/ PR212. The electronic release has function of intellectual protection.



Electronic Release Settings

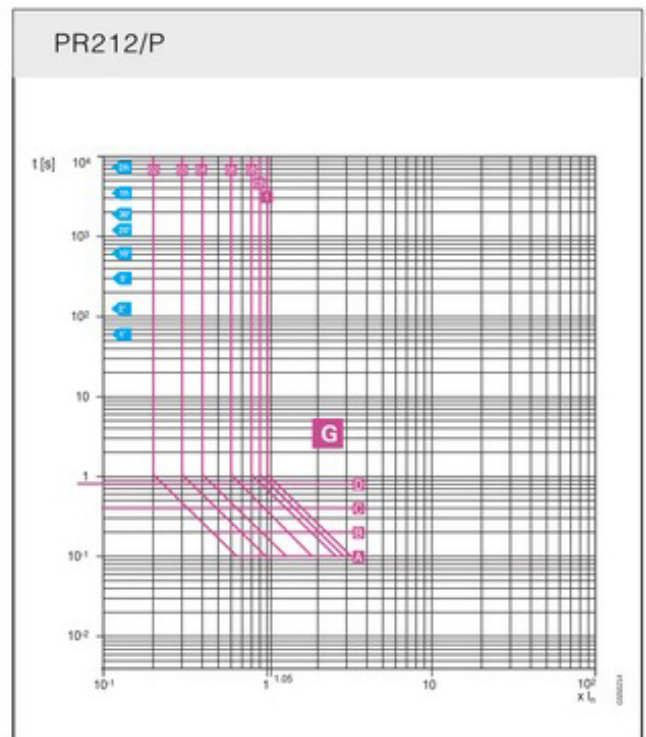
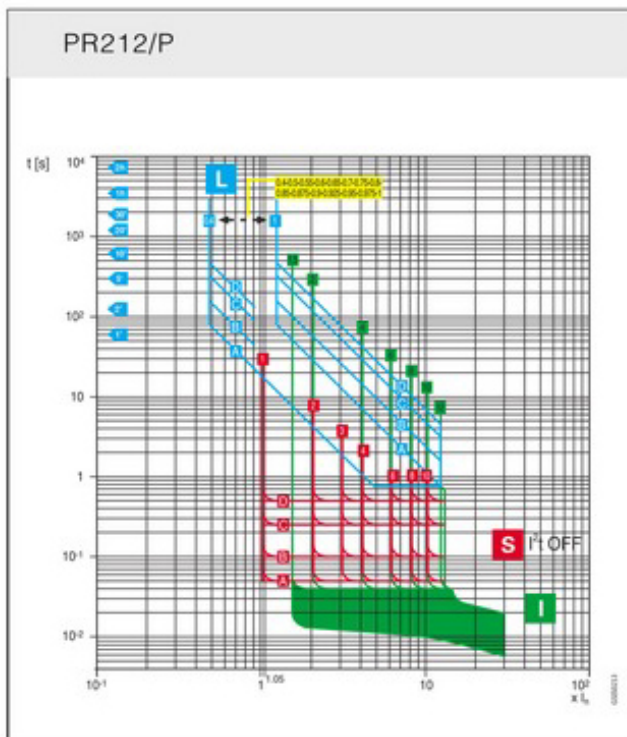
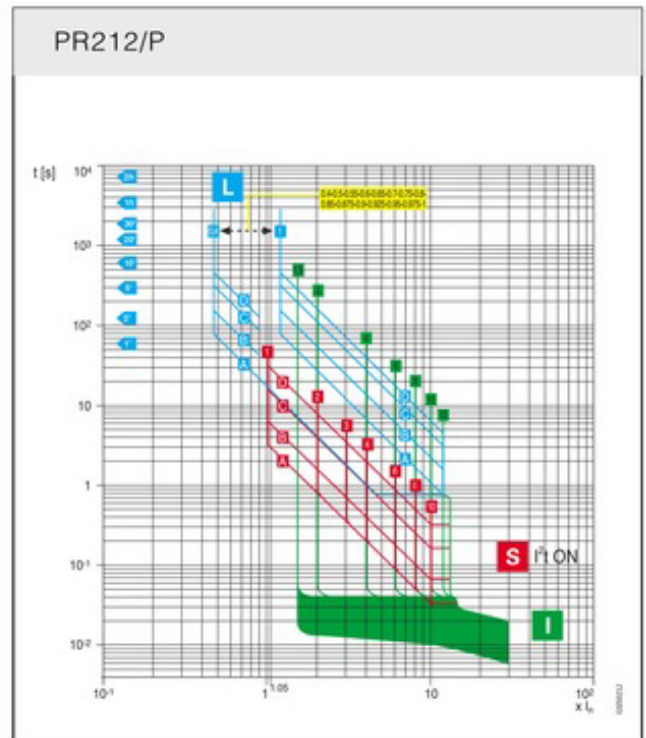
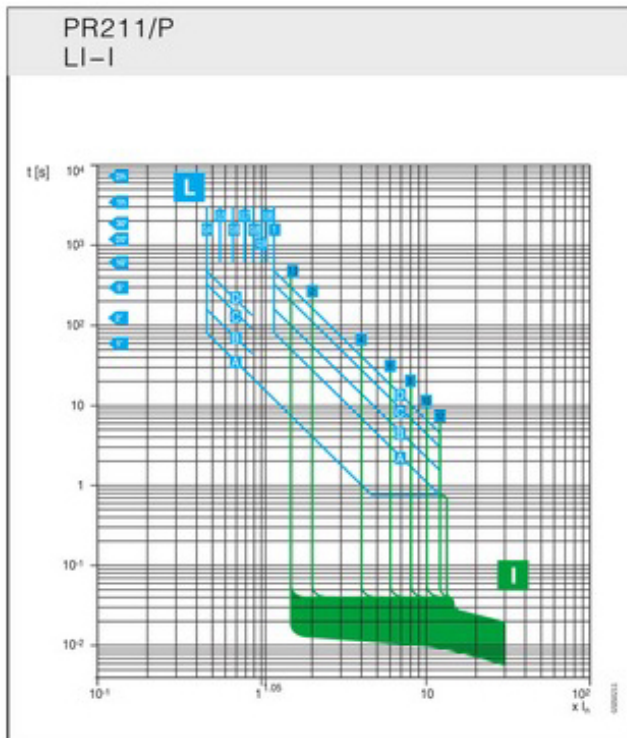
Table1 PR211 type

S.No.	Function	Settings	Type	PR211	PR211	PR211	PR211	Factory reset
			Poles	3P	3P	3P	3P	
			Rating (A)	250	400	800	1600	
1	L	Overload Current Setting (A)		(0.4,0.5,0.6,0.7,0.8, 0.9,0.95,1.0)xIn	(0.4,0.5,0.6,0.7,0.8, 0.9,0.95,1.0)xIn	(0.4,0.5,0.6,0.7,0.8, 0.9,0.95,1.0)xIn	(0.4,0.5,0.6,0.7,0.8, 0.9,0.95,1.0)xIn	1.0In
2		Time Delay at Overload Current Setting		3S,6S,12S,18S	3S,6S,12S,18S	3S,6S,12S,18S	3S,6S,12S,18S	3S
3	I	Instantaneous Current Setting		(1.5, 2, 4, 6, 8, 10, 12,OFF)xIn	(1.5, 2, 4, 6, 8, 10, 12,OFF)xIn	(1.5, 2, 4, 6, 8, 10, 12,OFF)xIn	(1.5, 2, 4, 6, 8, 10, 12,OFF)xIn	10In

Table2 PR212 type

S.No.	Function	Settings	Type	PR212	PR212	PR212	PR212	Factory reset
			Poles	3P	3P	3P	3P	
			Rating (A)	250	400/630	800	1600	
1	L	Overload Current Setting (A)		(0.4,0.5,0.55,0.6, 0.65,0.7,0.75,0.8) xIn	(0.4,0.5,0.55,0.6, 0.65,0.7,0.75,0.8) xIn	(0.4,0.5,0.55,0.6, 0.65,0.7,0.75,0.8) xIn	(0.4,0.5,0.55,0.6, 0.65,0.7,0.75,0.8) xIn	1.0In
2		Time Delay at Overload Current Setting		3S,6S,12S,18S	3S,6S,12S,18S	3S,6S,12S,18S	3S,6S,12S,18S	3S
3	S	Short - Circuit Current Setting (A)		(1, 2, 3, 4, 6, 8, 10, OFF)xIn	(1, 2, 3, 4, 6, 8, 10,OFF)xIn	(1, 2, 3, 4, 6, 8, 10,OFF)xIn	(1, 2, 3, 4, 6, 8, 10,OFF)xIn	6In
4		Time Delay at Short Circuit Current Setting		0.05, 0.1, 0.25, 0.5	0.05, 0.1, 0.25, 0.5	0.05, 0.1, 0.25, 0.5	0.05, 0.1, 0.25, 0.5	0.1S
5	I	Instantaneous Current Setting		(1.5, 2, 4, 6, 8, 10, 12,OFF)xIn	(1.5, 2, 4, 6, 8, 10, 12,OFF)xIn	(1.5, 2, 4, 6, 8, 10, 12,OFF)xIn	(1.5, 2, 4, 6, 8, 10, 12,OFF)xIn	10In
6	G	Ground Fault Current Setting (A)		(0.2,0.3,0.4, 0.6, 0.8,0.9, 1.0, OFF) xIn	(0.2,0.3,0.4, 0.6, 0.8,0.9, 1.0, OFF) xIn	(0.2,0.3,0.4, 0.6, 0.8,0.9, 1.0, OFF) xIn	(0.2,0.3,0.4, 0.6, 0.8,0.9, 1.0, OFF) xIn	1.0In
7		Time Delay at Ground Fault Setting		0.1, 0.2, 0.4, 0.8	0.1, 0.2, 0.4, 0.8	0.1, 0.2, 0.4, 0.8	0.1, 0.2, 0.4, 0.8	0.4S
8		Selection of electric or electronic parameters set		(ELT/MAN) USB Function SET (switch ELT/MAN)				
		Used for setting parameters of dip switch of zero line		InN=%In,50/100 switch 50/100				
		Socket for connection measuring device		Panel socket				

Electronic release characteristic curves

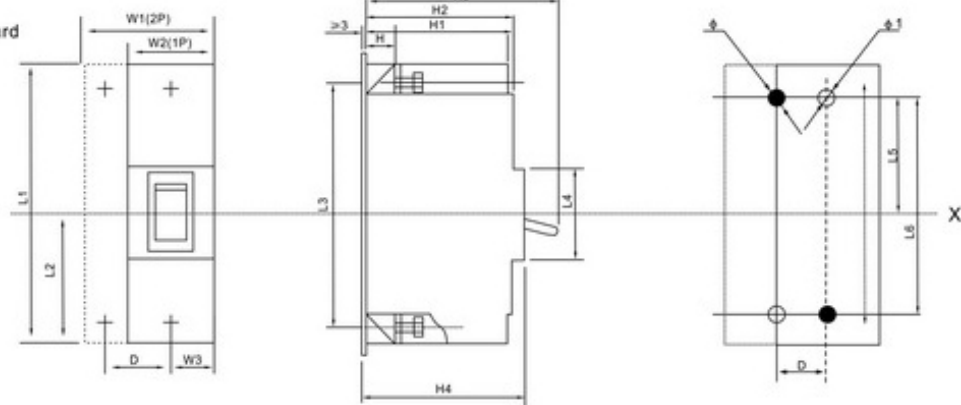


Overall and installation size

Fixed type

DAM1-160~200(L)

Connect wire in front of board



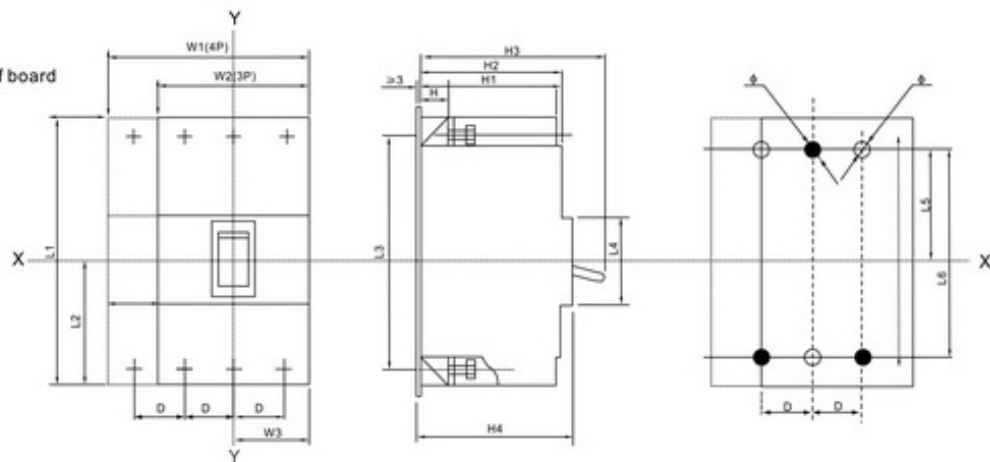
Type	D	L1	L2	L3	L4	L5	L6	W1	W2	W3	H	H1	H2	H3	H4	φ	φ 1
DAM1-160/1P	—	120	48	102	45	62	102	—	30	15	27.5	67.5	70	91	76	4.5	3.5
DAM1-200/2P	30	120	48	102	45	62	102	60	—	15	27.5	67.5	70	93	76	4.5	3.5
DAM1-200L/2P	30	155	83	135	45	62	135	60	—	15	27.5	67.5	70	93	76	4.5	3.5

Fixed type

DAM1-63~160(L)

DAM1X-160

Connect wire in front of board



Type	D	L1	L2	L3	L4	L5	L6	W1	W2	H	H1	H2	H3	H4	φ
DAM1-63/125	25	120	48	102	45	62	102	101	76	25.5	67.5	70	91	76	4.5
DAM1-63/125L	25	155	83	135	45	62	135	101	—	25.5	67.5	70	91	76	4.5
DAM1-160	30	120	48	102	45	62	102	120	90	27.5	67.5	70	93	76	4.5
DAM1x-160	30	120	48	102	45	62	102	120	90	27.5	67.5	70	93	76	4.5
DAM1-160L	30	155	83	135	45	62	135	120	—	27.5	67.5	70	93	76	4.5

Overall and installation size

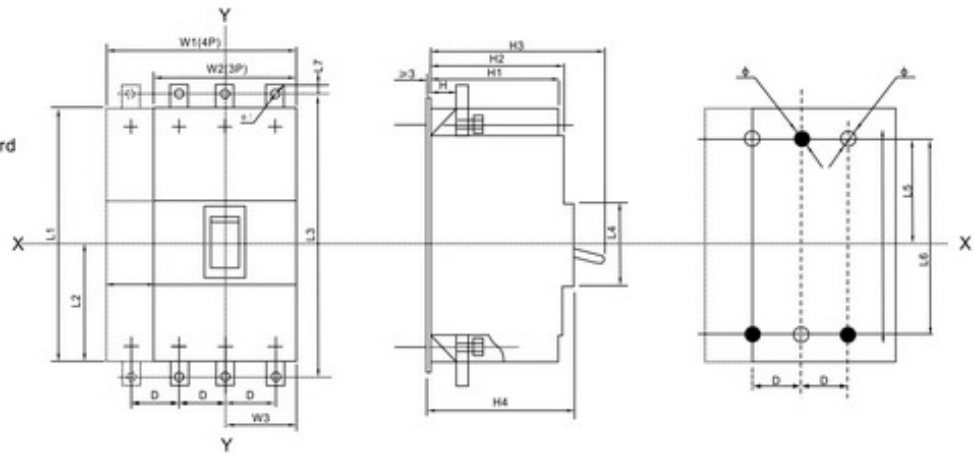
Fixed type

DAM1-250~1600

DAM1-250~630L

DAM1X-250~800

Connect wire in front of board

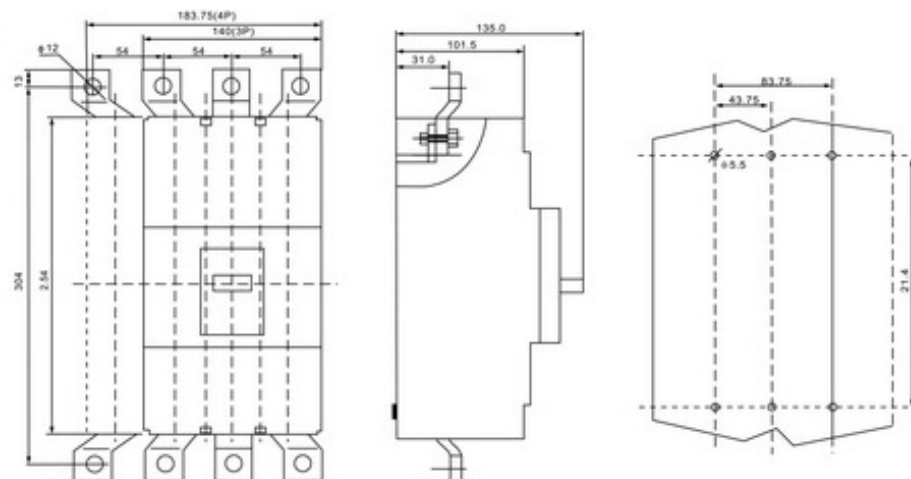


Type	D	L1	L2	L3	L4	L5	L6	W1	W2	H	H1	H2	H3	H4	φ	L7	φ 1
DAM1-250	35	170	87.25	206	105	73.75	139	140	105	25	101.5	103.5	135	114	5.5	10.8	φ 8.5
DAM1-250L	35	210	112.5	246	105	73.75	179	140	—	25	101.5	103.5	135	114	5.5	10.8	φ 8.5
DAM1x-250	35	255	87.25	278.5	105	154.5	224	140	105	25	101.5	103.5	135	114	5.5	10.8	φ 8.5
DAM1x-400	43.75	339	125.25	366	105	192.5	299	183.75	140	25	101.5	103.5	135	114	5.5	12.0	φ 10.5
DAM1-630 (400A)	43.75	254	125.25	281	105	107.25	214	183.75	140	25	101.5	103.5	135	114	5.5	12.0	φ 14
DAM1-630L (400L)	43.75	254	117.5	281	105	107.25	214	183.75	—	25	101.5	103.5	135	114	5.5	12.0	φ 10.5
DAM1-800	70	268	142.75	241	105	109.25	237	280	210	23	101.5	103.5	161	117	5.5	10.0	φ 11
DAM1x-800	70	406	142.75	479	105	256.5	375	280	210	23	101.5	103.5	161	117	5.5	10.0	φ 11
DAM1-1600	70	406	189	513	105	203	378	280	210	39	140	142	196	155	5.5	13.5	φ 11

Fixed type

DAM1-630(500A, 630A)

Connect wire in front of board

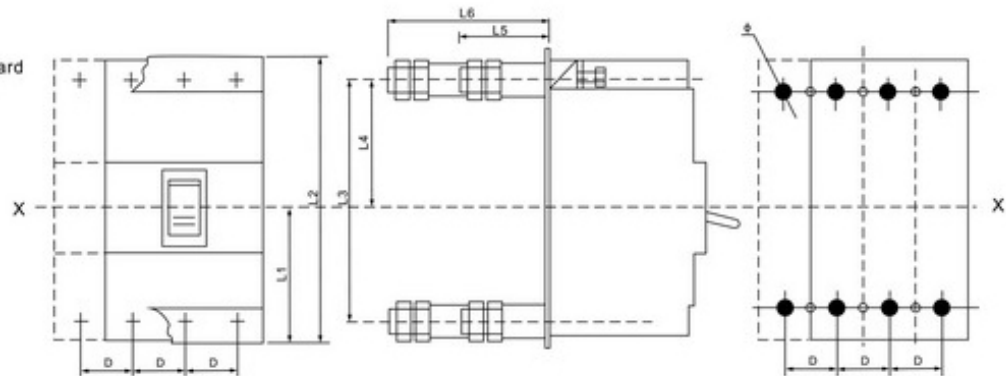


Overall and installation size

Fixed type

DAM1-63~800
DAM1-60~630L
DAM1X-160~630

Connect wire behind board

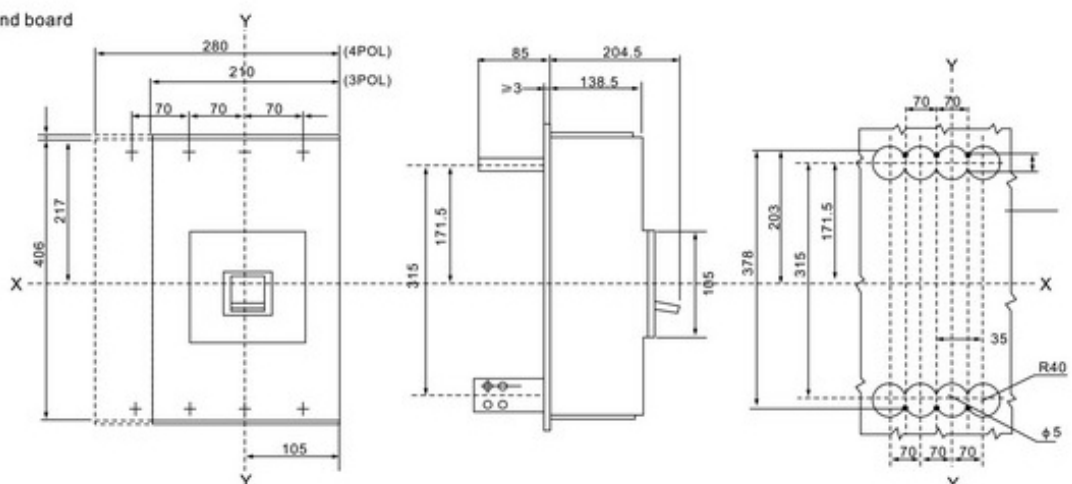


Type	D	L1	L2	L3	L4	L5	L6	φ
DAM1-63/125	25	50	124	102	39	43	76	18
DAM1-63/125L	25	83	155	135	39	43	76	18
DAM1-160	30	50	124	102	39	43	76	18
DAM1-160L	30	83	155	135	39	43	76	18
DZM1X-160	30	50	124	102	39	43	76	18
DAM1-250	35	85.25	175	145	73.75	55	105	24
DAM1-250L	35	112.5	210	179	73.75	55	105	24
DAM1X-250	35	85.25	255	224	123.5	55	105	24
DAM1X-400	43.75	131.25	285	254	153.5	55	105	30
DAM1-630	43.75	131.25	259	218	107.25	55	105	30
DAM1-630L(400L)	43.75	117.5	254	218	107.25	55	105	30
DAM1-800	70	145.25	273	241	117.25	55	74.5	50

Fixed type

DAM1H-1600

Connect wire behind board



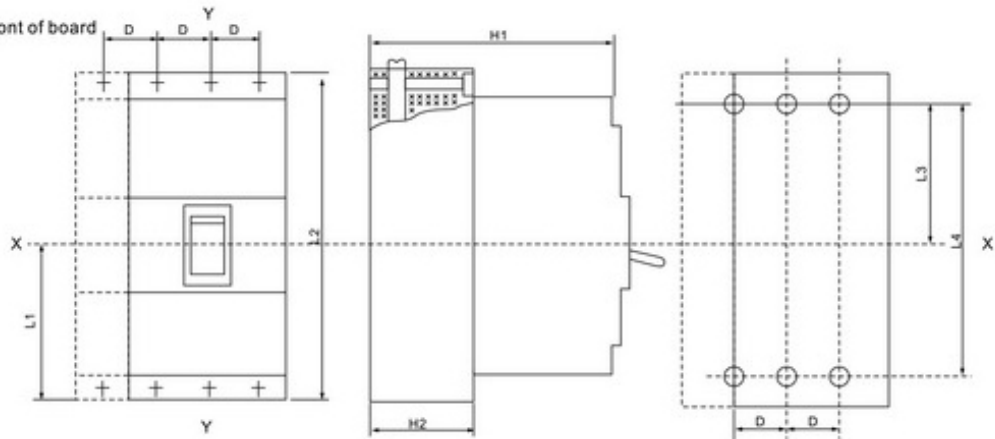
Overall and installation size

Plug-in version

DAM1-63~160

DAM1X-160

Connect wire in front of board



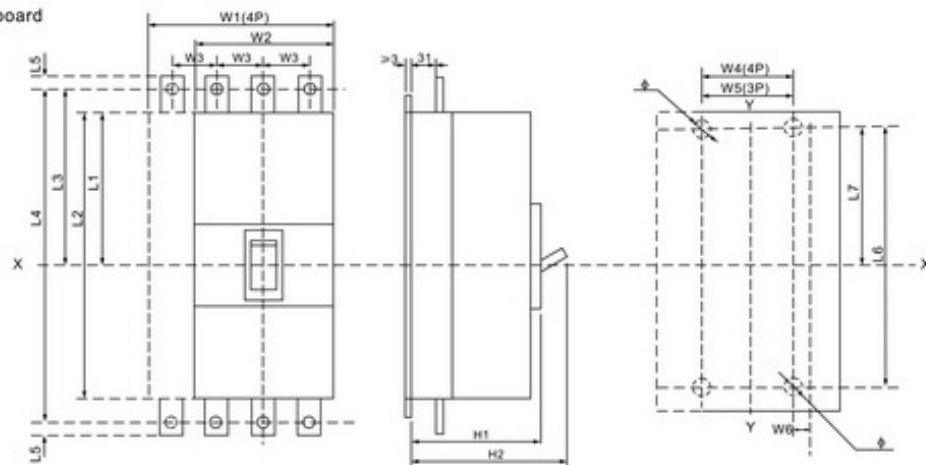
Type	D	L1	L2	L3	L4	H1	H2
DAM1- 63 125	25	70	163	84	144	123	52
DAM1- 160	30	70	163	84	144	123	52
DAM1X - 160	30	70	163	84	144	123	52

Plug-in version

DAM1-250~630

DAM1-630L(400L)

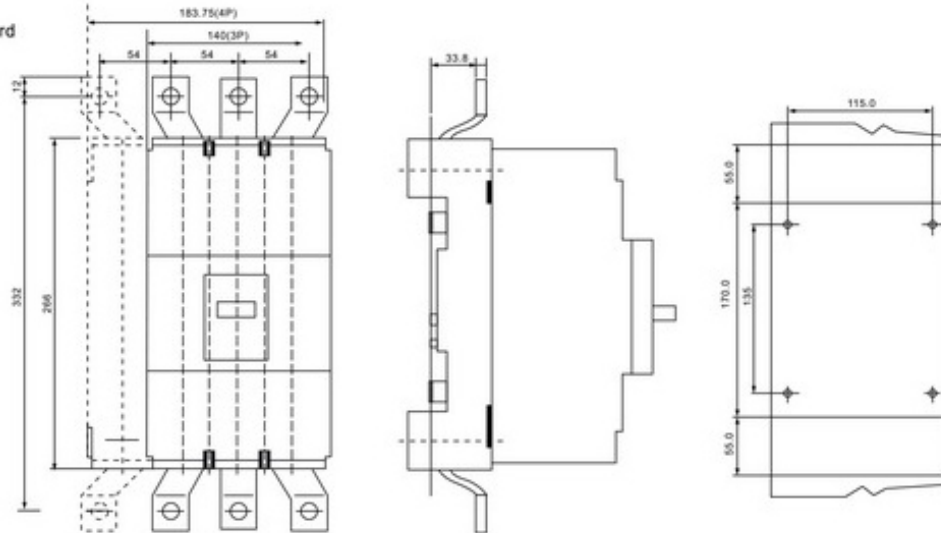
Connect wire in front of board



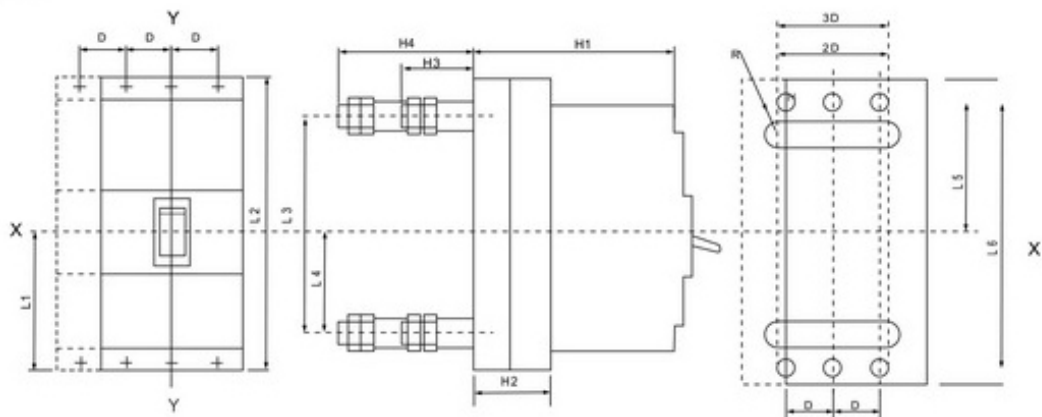
Type	L1	L2	L3	L4	L5	L6	L7	W1	W2	W3	W4	W5	W6	H1	H2	φ
DAM1-250	89.75	175	107.25	210	10	52.25	100	140	105	35	105	70	25	153	184.5	5
DAM1-630(400)	127.75	259	150.75	305	14	65.75	135	183.75	140	43.75	160	115	58	153	184.5	6
DAM1-630L(400L)	127.75	259	150.75	305	14	65.75	135	183.75	140	43.75	160	115	58	153	184.5	6

Overall and installation size

Plug-in version
DAM1-630
Connect wire in front of board



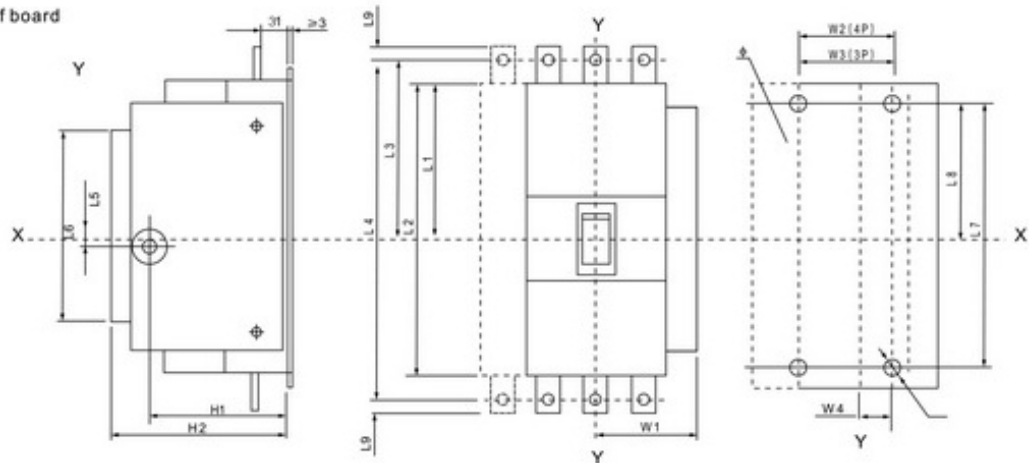
Plug-in version
Connect wire behind board



Type	D	L1	L2	L3	L4	L5	L6	H1	H2	H3	H4	H5
DAM1-63 125	25	70	163	102	39	84	144	123	52	50	80	13
DAM1-160	30	70	163	102	39	84	144	123	52	50	80	13
DAM1-250	35	85.25	175	143	69.2	52.5	100	184.5	83	52	96	14
DAM1X-250	35	85.25	175	143	69.2	52.5	100	184.5	83	52	96	14
DAM1X-400	43.75	131.25	259	218	110.75	107.25	218	184.5	83	55	100	14
DAM1-630	43.75	131.25	259	218	110.75	107.25	218	184.5	83	55	100	14
DAM1-630L(400L)	43.75	131.25	259	218	110.75	107.25	218	184.5	83	55	100	14

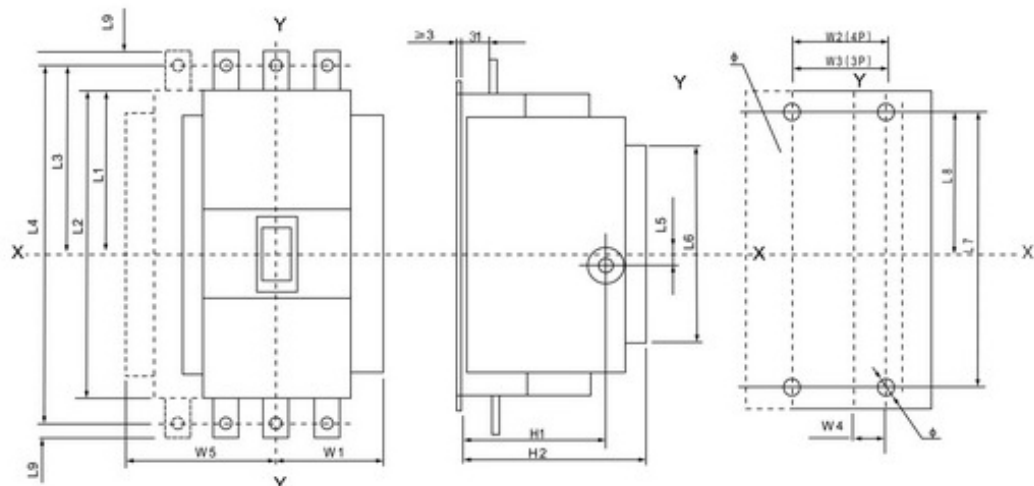
Overall and installation size

Draw-out version
Connect wire in front of board



Type	L1	L2	L3	L4	L5	L6	L7	L8	L9	W1	W2	W3	W4	W5	H1	H2	φ
DAM1-250	89.75	175	107.25	210	1.75	105	52.25	100	106	84	105	70	25	-	167	190	5
DAM1-630	127.75	259	150.75	305	1.75	105	65.75	135	140	101.5	160	115	58	-	167	190	6

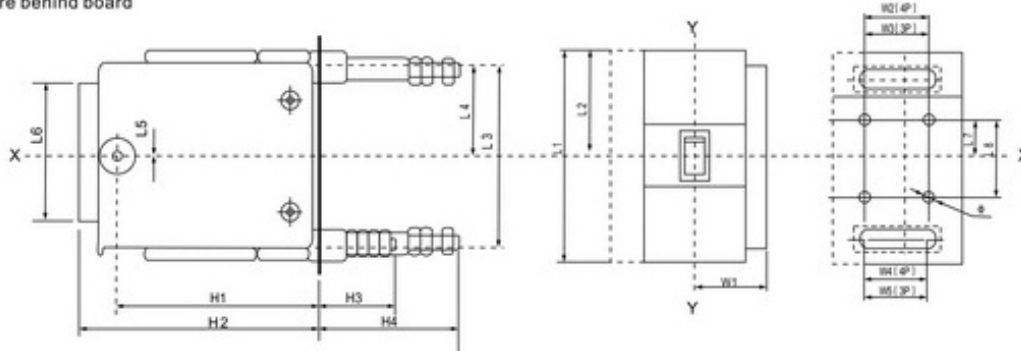
Draw-out version
Connect wire in front of board



Type	L1	L2	L3	L4	L5	L6	L7	L8	L9	W1	W2	W3	W4	W5	H1	H2	φ
DAM1-800	133	295	158	345	14.5	140	45.5	120	20	136.5	210	210	140	193.5	167	190	8.5
DAM1-1600	211.25	406	268.25	520	8.25	140	68.25	120	-	136.5	210	210	140	193.5	218.5	241.5	8.5

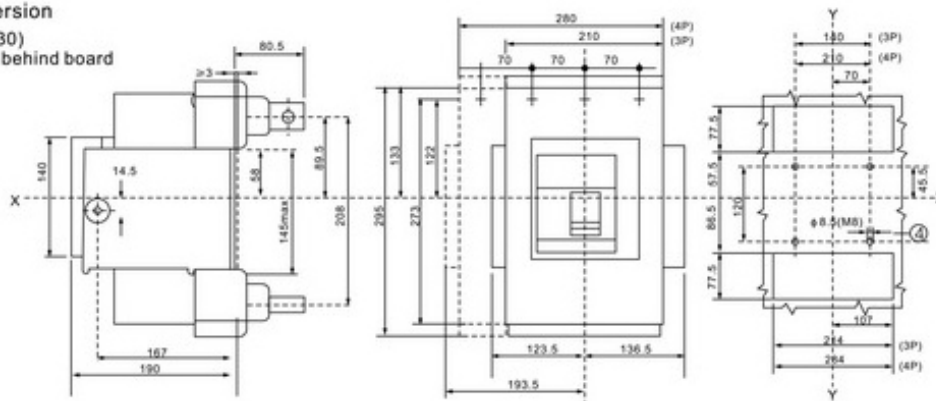
Overall and installation size

Draw-out version
Connect wire behind board



Type	L1	L2	L3	L4	L5	L6	L7	L8	W1	W2	W3	W4	W5	H1	H2	H3	H4	φ
DAM1-250	175	87.75	143	73.75	1.75	105	52.25	100	84	105	70	70	105	167	190	52	96	5
DAM1X-250	175	87.75	143	73.75	1.75	105	52.25	100	84	105	70	70	105	167	190	52	96	6
DAM1X-400	259	127.75	218	107.25	1.75	105	65.75	135	101.5	160	115	87.5	131.25	167	190	55	100	6
DAM1-630	259	127.75	218	107.25	1.75	105	65.75	135	101.5	160	115	87.5	131.25	167	190	55	100	6
DAM1-630L(400L)	259	127.75	218	107.25	1.75	105	65.75	135	101.5	160	115	87.5	131.25	167	190	55	100	5

Draw-out version
DAM1-800(630)
Connect wire behind board



Draw-out version
DAM1-1600(1250)
Connect wire behind board

